

# CMV0.7F-1 / CMV0.7E-1 VARIABLE TRANSFORMERS INSTALLATION AND SAFETY INSTRUCTIONS

Manufactured to BS7452 / IEC60989



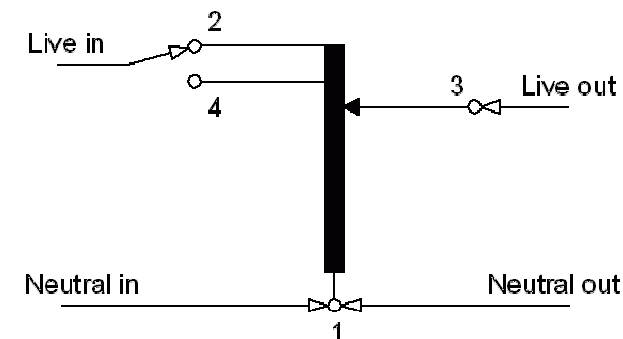
1. Read all of these instructions before you use the transformer
2. This variable autotransformer is **NOT** designed to provide mains isolation
3. Variable autotransformers operate at mains voltages  
**DO NOT EXCEED THE MAXIMUM VOLTAGE AND CURRENT RATINGS**
4. Installation connection and maintenance should only be carried out by suitably qualified personnel  
**Note: Remove the protective packing disc from the carbon brush before use**

### Open Style

### Enclosed Style

- |   |   |
|---|---|
| <p>5F. The transformer is an open style unit and must be fitted into an enclosure or other protective environment before use.</p> <p>6F. When connected to the mains supply the terminals, brushes, wiper arm and track surface are at mains voltage and potentially lethal on contact.</p> | <p>5E. The input lead to the unit should be either hard wired to an enclosed mains source or fitted with a suitable rated plug.</p> <p>6E. The output lead should be either hard wired inside the equipment it is to operate or wired to a suitable socket.</p> |
|---|---|
7. The terminal marked "1" is a common neutral for both the supply input and the load output.
  8. The load must always be connected across the output, "1" and "3" terminals, **NEVER** connect the load in series with the transformer
  9. Carbon brushes should be inspected for damage and wear, faulty and worn brushes **will** result in damage to the transformer winding.
  10. These units are Class 1 insulated and must not be tested on Portable Appliance Testers (PAT) as Class 2 double insulated products. Flash test only at 2.0KV. Flash test only between Earth and Live **DO NOT** flash test between input and output

### WIRING INSTRUCTIONS



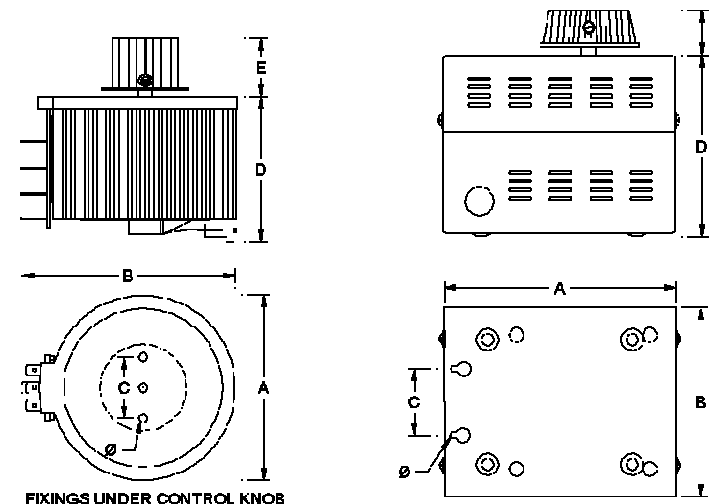
Input "1" and "2" Output 0 – 100% of input

Input "1" and "4" Output 0 – 112% of input

Output Neutral "1", and Live wiper arm contact "3"

### OPEN

### ENCLOSED



Model	Output	Style	A	B	C	D	E	Ø
CMV0.7F-1	0.7A	Open	88	100	28	67	23	4
CMV0.7E-1	0.7A	Enclosed	120	95	46	75	30	4